

REF. SHEET:
DESCRIPTION: DUDLEY SITE

MACON COUNTY DUMP SITES

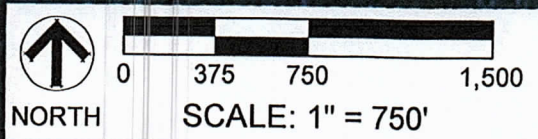
FIGURE 1

USGS QUADRANGLE MAP
GMC #
DATE: 12/7/10
DRAWN BY: MAM



GOODWYN | MILLS | CAWOOD

2660 EASTCHASE LANE, SUITE 200 | MONTGOMERY, AL 36117
Tel 334.271.3200 | GMCNETWORK.COM

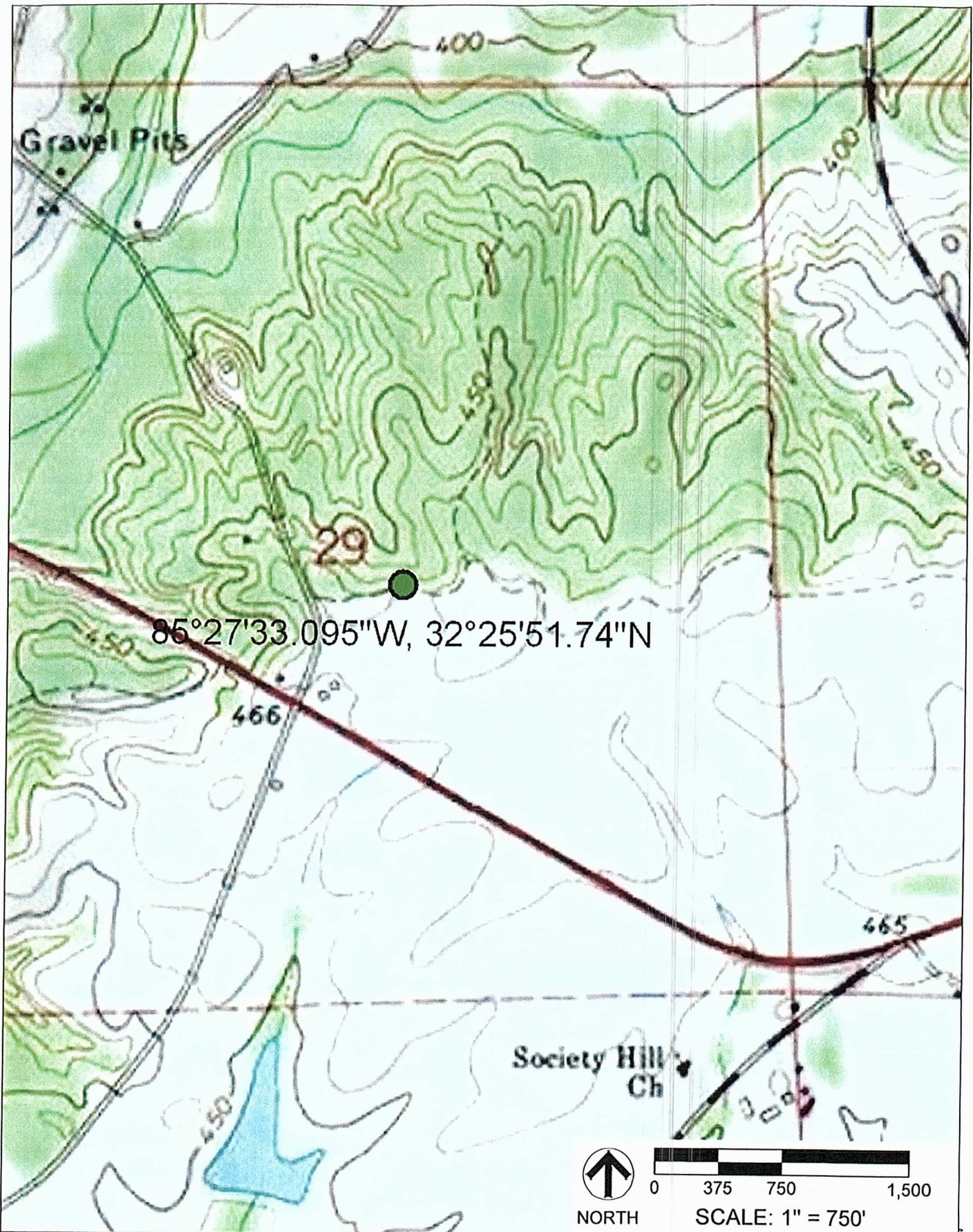


REF. SHEET:
 DESCRIPTION: DUDLEY SITE
MACON COUNTY DUMP SITES

FIGURE 2

AERIAL PHOTOGRAPH
 GMC #
 DATE: 12/7/10
 DRAWN BY: MAM

GOODWYN | MILLS | CAWOOD
 2660 EASTCHASE LANE, SUITE 200 | MONTGOMERY, AL
 36117
 Tel 334.271.3200 | GMCNETWORK.COM



REF. SHEET:
DESCRIPTION: TORBETT SITE

MACON COUNTY DUMP SITES

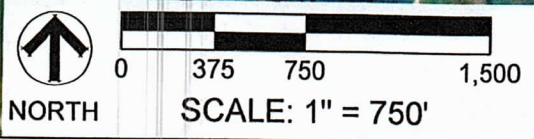
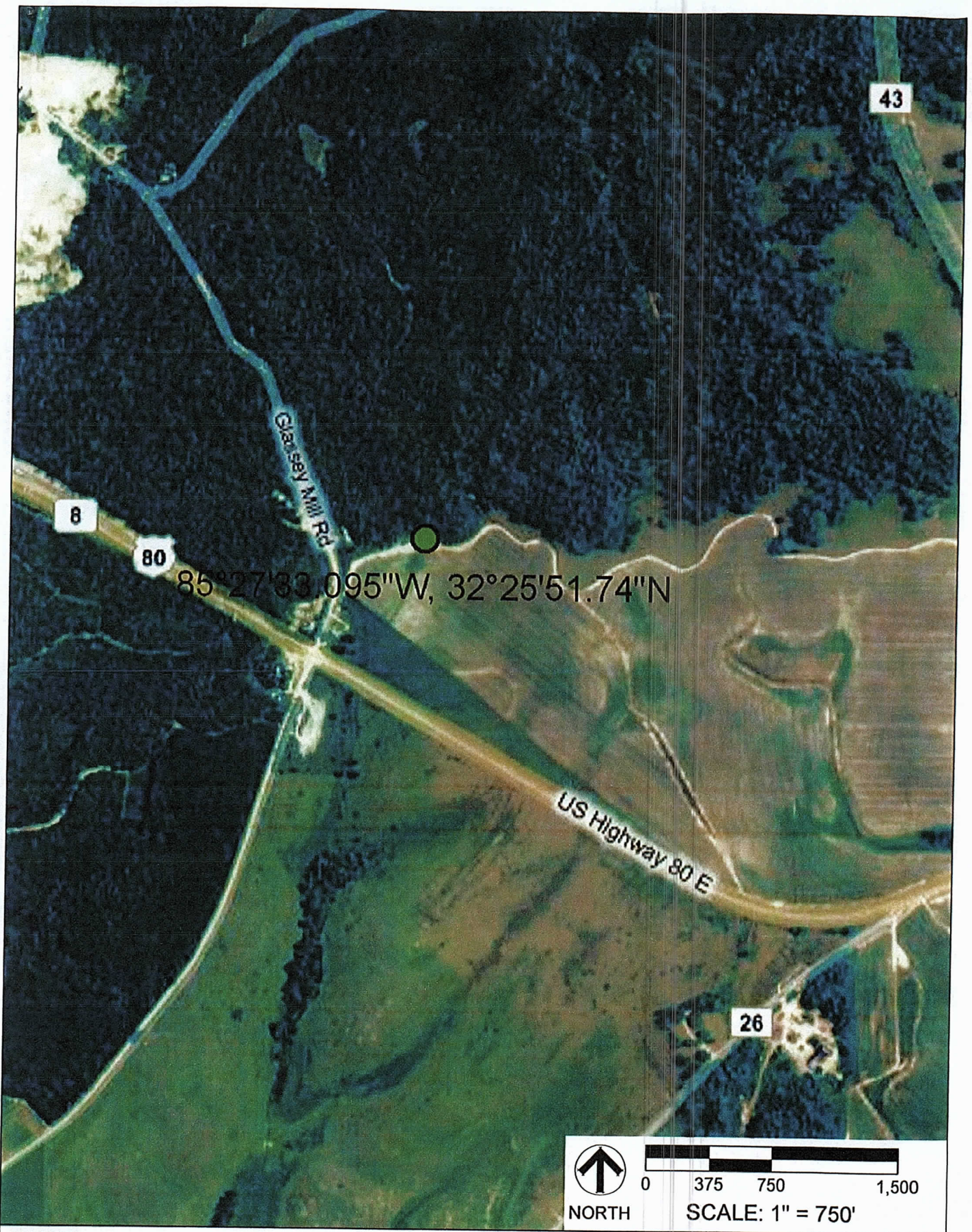
FIGURE 3

USGS QUADRANGLE MAP
GMC #
DATE: 12/7/10
DRAWN BY: MAM



GOODWYN | MILLS | CAWOOD

2660 EASTCHASE LANE, SUITE 200 | MONTGOMERY, AL
36117
Tel 334.271.3200 | GMCNETWORK.COM



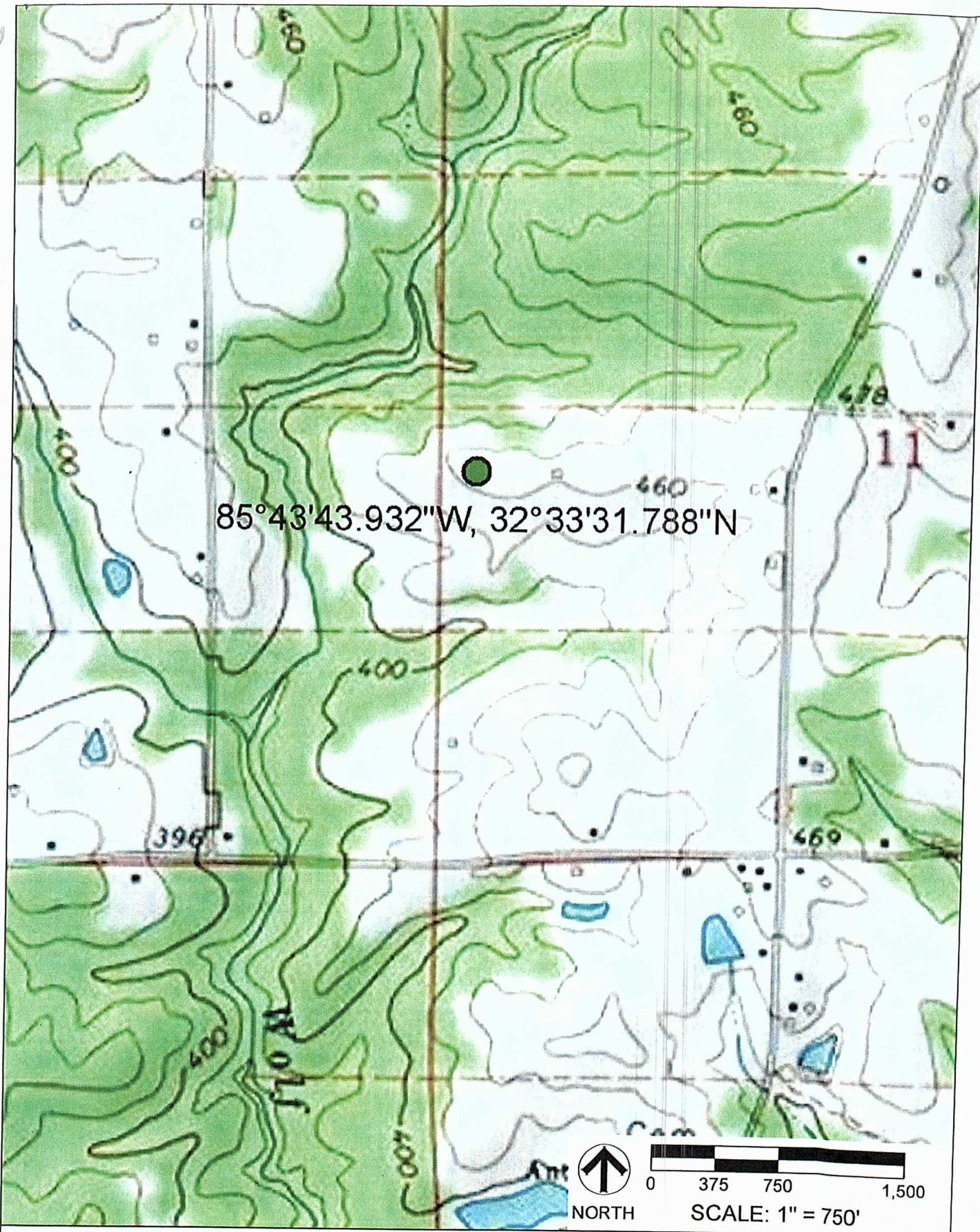
REF. SHEET:
DESCRIPTION: TORBETT SITE

MACON COUNTY DUMP SITES

FIGURE 4

AERIAL PHOTOGRAPH
GMC #
DATE: 12/7/10
DRAWN BY: MAM

GOODWYN | MILLS | CAWOOD
2660 EASTCHASE LANE, SUITE 200 | MONTGOMERY, AL 36117
Tel: 334.271.3200 | GMCNETWORK.COM



REF. SHEET:
DESCRIPTION: GREATHOUSE SITE

MACON COUNTY DUMP SITES

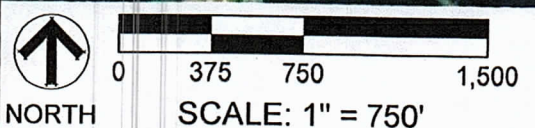
FIGURE 5

USGS QUADRANGLE MAP
GMC #
DATE: 12/7/10
DRAWN BY: MAM



GOODWYN | MILLS | CAWOOD

2660 EASTCHASE LANE, SUITE 200 | MONTGOMERY, AL 36117
Tel 334.271.3200 | GMCNETWORK.COM



REF. SHEET:
 DESCRIPTION: GREATHOUSE SITE
MACON COUNTY DUMP SITES

FIGURE 6

AERIAL PHOTOGRAPH
 GMC #
 DATE: 12/7/10
 DRAWN BY: MAM

GOODWYN | MILLS | CAWOOD
 2660 EASTCHASE LANE, SUITE 200 | MONTGOMERY, AL
 36117
 Tel: 334.271.3200 | GMCNETWORK.COM

Macon County Solid Waste Remediation Plan for Unauthorized Dump Sites
GOODWYN, MILLS & CAWOOD, INC.

APPENDIX B
PHOTOGRAPHS

P-1



Dudley Site

P-2



Dudley Site

P-3



Dudley Site

P-4



Dudley Site

P-5



Torbett Site

P-6



Torbett Site

P-7



Torbett Site

P-8



Torbett Site

P-9



Greathouse Site

P-10



Greathouse Site

P-11



Greathouse Site

P-12



Greathouse Site

Macon County Solid Waste Remediation Plan for Unauthorized Dump Sites
GOODWYN, MILLS & CAWOOD, INC.

APPENDIX C
NO DUMPING SIGN

NO DUMPING

Code of Alabama 1975, §22-27-7 and ADEM Admin. Code r. 335-13-1-.13(1) prohibits open or unauthorized dumps.

Any person violating these provisions shall be guilty of a misdemeanor punishable by a fine.

REPORT VIOLATORS
CALL 1-800-533-ADEM



Macon County Solid Waste Remediation Plan for Unauthorized Dump Sites
GOODWYN, MILLS & CAWOOD, INC.

APPENDIX D
SIGNATURE PAGES

Macon County Solid Waste Remediation Plan for Unauthorized Dump Sites
GOODWYN, MILLS & CAWOOD, INC.

SIGNATURES

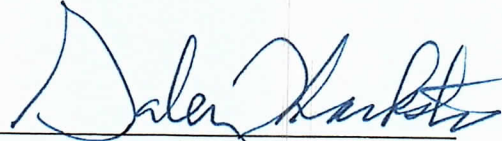
CERTIFICATION

"I certify that this remediation plan has been prepared in accordance with Solid Wastes and Recyclable Materials Management Act, the Solid Waste Fund Site Remediation (SWFSR), Code of Alabama, 1975, 22-27-10, 22-27-12 & 22-27-7. All information collected was reviewed and the collecting of information was overseen by a person qualified to conduct environmental site assessments. The information submitted herein, to the best of my knowledge and belief, is true, accurate, and complete."



Rob Carlton
Biologist

12/10/2010
Date



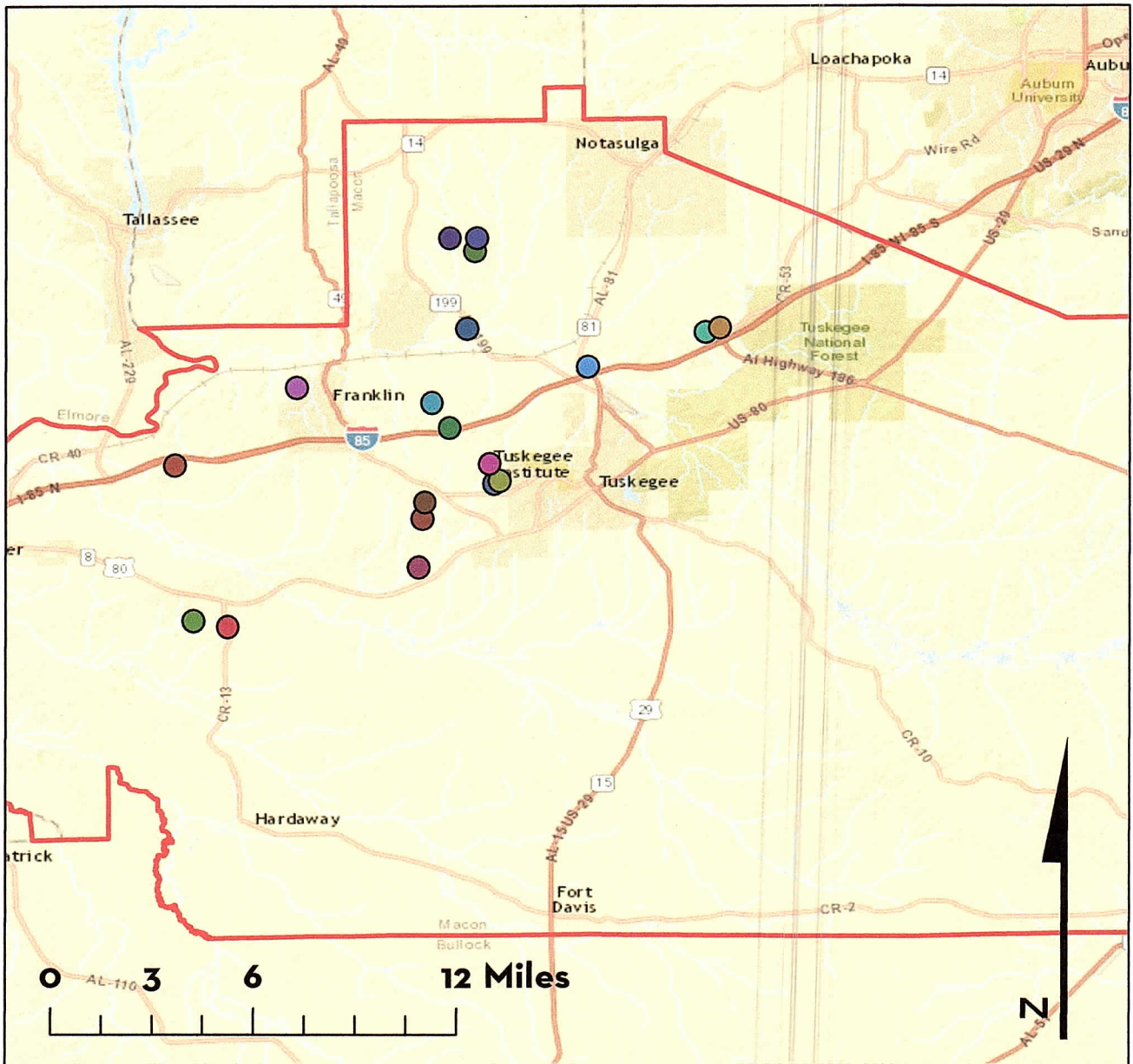
Galen Thackston
Professional Engineer

12/10/10
Date

APPENDIX G

ILLEGAL DUMP SITES MAP

Macon County Illegal Dump Sites



Illegal Dump Sites			
	County Road 13		County Road 81
	County Road 40		County Road 81 #2
	Amber Road		Highway 81
	Counsel Drive		Motley Lane
	County Road #3		County Road 60
	Old Grimmett Road		Motley Lane #2
	Old Grimmett Road #2		Torch 85
	St. Johns Church Road		Torch 85 #2